



# INCLUSIVE EDUCATION ESSENTIALS

## The Fundamentals of Teaching Students with Intellectual Disability



### ABOUT

The Inclusive Education Essentials workshop focuses on strategies to include and engage students with intellectual disability. This workshop is aimed at educators new to inclusive education for students with intellectual disability or those who feel they would benefit from a refresher.

Attendees will gain:

- A solid foundational understanding of the principles of inclusive education
- An understanding of the diagnosis of intellectual disability and its impact on learning
- A range of practical tools, strategies and resources for supporting learning and engagement in the inclusive classroom

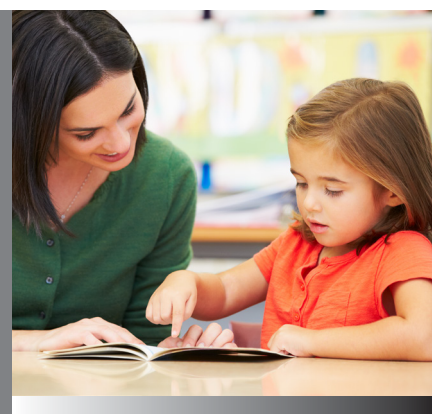


### WHO SHOULD ATTEND

Education professionals including teachers and teaching assistants, pre-service teachers, and therapists who are new to the field of inclusive education or seeking a refresher.

**“ Super informative & extremely valuable for teachers, support staff and anyone who works with students who have diverse learning needs**

– Classroom Teacher, Melbourne





## LOCATIONS

**CANBERRA: Monday 1st March**  
Gungahlin Lakes Golf Club

**LAUNCESTON: Monday 15th March**  
Tramsheds

**TOWNSVILLE: Monday 29th March**  
Rydges Southbank Townsville

**CAIRNS: Tuesday 30th March**  
Novotel Cairns Oasis Resort

**GOLD COAST: Tuesday 27th April**  
Southport Sharks

**BRISBANE: Wednesday 28th April**  
Victoria Park Golf Club

**ADELAIDE: Monday 10th May**  
Walkers Arms Hotel

## PROGRAM

8:30 - 9:00am	REGISTRATIONS
9:00 - 9:45am	Welcome Introduction to Inclusive Education
9:45 - 10:30am	Understanding Intellectual Disability: Characteristics and Strategies for Support
10:30 - 11:00am	MORNING TEA
11:00 - 11:45am	The (not so) Secret Language of Behaviour: An Introduction to Positive Behaviour Support
11:45 - 12:15pm	Strategies for Promoting Independence
12:15 - 12:45pm	LUNCH
12:45 - 1:30pm	Effective Literacy Instruction for Learners with Intellectual Disability
1:30 - 2:00pm	Adapting Mathematics Instruction for Learners with Intellectual Disability

### PLEASE NOTE

This is tentative timetable and Illume Learning reserves the right to make changes at any stage. Any changes will be announced via Facebook and [www.illumelarning.com.au](http://www.illumelarning.com.au) as soon as possible.

## FEES

**General Rate** - \$279pp incl GST

**Group Rate\*** - \$249pp incl GST

*\*Applies when 4 or more staff from the same school/organisation register for the same event. No split invoices.*



**TO REGISTER: [www.illumelarning.com.au/events](http://www.illumelarning.com.au/events)**